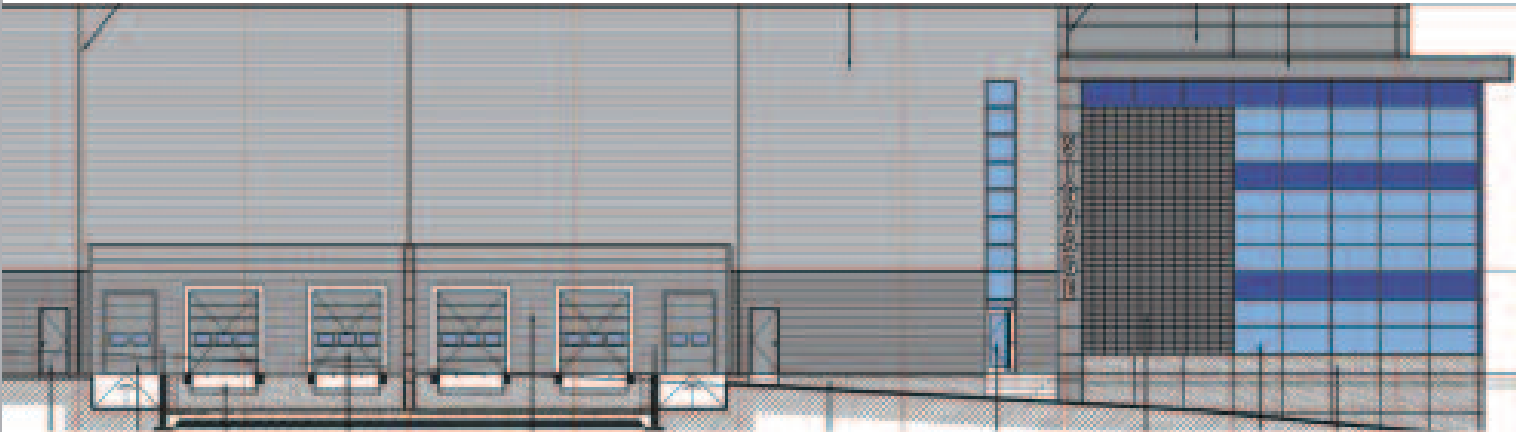


The Lisney logo consists of the word "Lisney" in a white, sans-serif font, enclosed within a white rectangular border. This is set against a solid red square background.

FOR SALE /
TO LET

PROPOSALS INVITED
NEW INDUSTRIAL/WAREHOUSE DEVELOPMENT
RINGASKIDDY, CORK



021-427 5079

- Industrial development sites, from 0.4 hectares up to 1.9 hectares (1 acre up to 4.7 acres)
- Turnkey high specification buildings can be provided for sale or lease.
- Strategic location in Ringaskiddy opposite the deep water port in an established industrial area, approx. 12 kilometres south east of Cork city.





021-427 5079

LOCATION

Ringaskiddy is situated on the west side of Cork Harbour approximately 12 kilometres east of Cork city and 5 kilometres east of Carrigaline. It has a deep water port and it is an established industrial location particularly for the pharmaceutical industry and many of the world's leading pharmaceutical companies are located there.

Ringaskiddy has immediate access to Cork's superb road infrastructure via the N28 which connects with the South Ring (N25) road network providing easy access to Cork city centre and all main arterial routes. It is a strategic location for warehouse, distribution and logistics uses.

THE DEVELOPMENT

The property comprises a Greenfield development site of approx. 1.9 hectares (4.7 acres) situated just east of Ringaskiddy village and it benefits from main road frontage. It is zoned "industry and enterprise" in the Carrigaline Electoral Area Local Area Plan. Serviced development sites from 0.4 hectares (1 acre) are available. Turnkey high specification warehouse, industrial or office buildings can be provided to suit specific requirements, for sale or lease.

FURTHER INFORMATION

Contact: Edward Hanafin: ehanafin@lisney.com
John Archer: jarcher@lisney.com



Reproduced by Ordnance Survey by permission of Government Licence No. AU0002101



CORK
1 South Mall, Cork.
Tel: +353 21 427 5079
Fax: +353 21 427 2405
Email: cork@lisney.com

OTHER OFFICES
24 St. Stephen's Green, Dublin 2. Tel: +353 1 638 2700 Fax: +353 1 661 5086
Email: dublin@lisney.com
5 Linenhall Street, Belfast BT2 8AA. Tel: +44 2890 501 501 Fax: +44 2890 501 505
Email: property@lisney-belfast.com

Lisney for themselves and the Vendor/Lessor whose Agents they are give notice that: 1. These particulars do not constitute any part of an offer or contract. 2. All statements contained in these particulars as to this property are made without responsibility on the part of the Agents or the Vendor/Lessor and none of the statements contained in these particulars as to this property are to be relied on as statements or representations of fact. 3. The particulars, various plans, photographs, dimensions, references to condition and permissions for use and occupation are given in good faith and are believed to be correct but their accuracy is not guaranteed and any intending Purchasers or Tenants shall satisfy themselves by inspection or otherwise as to correctness of each of them. No omission, accidental error or misdescription shall be ground for a claim for compensation nor for the rescission of the contract by either the Vendor/Lessor or the Purchaser/Tenant. 4. Neither the Vendor/Lessor nor Lisney nor any person in their employment has any authority to make or give any representation or warranty whatever in relation to the property. 5. Prices are quoted exclusive of VAT (unless otherwise stated) and all negotiations are conducted on the basis that the Purchaser/Tenant shall be liable for any VAT arising on the transaction.